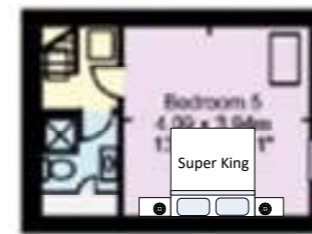
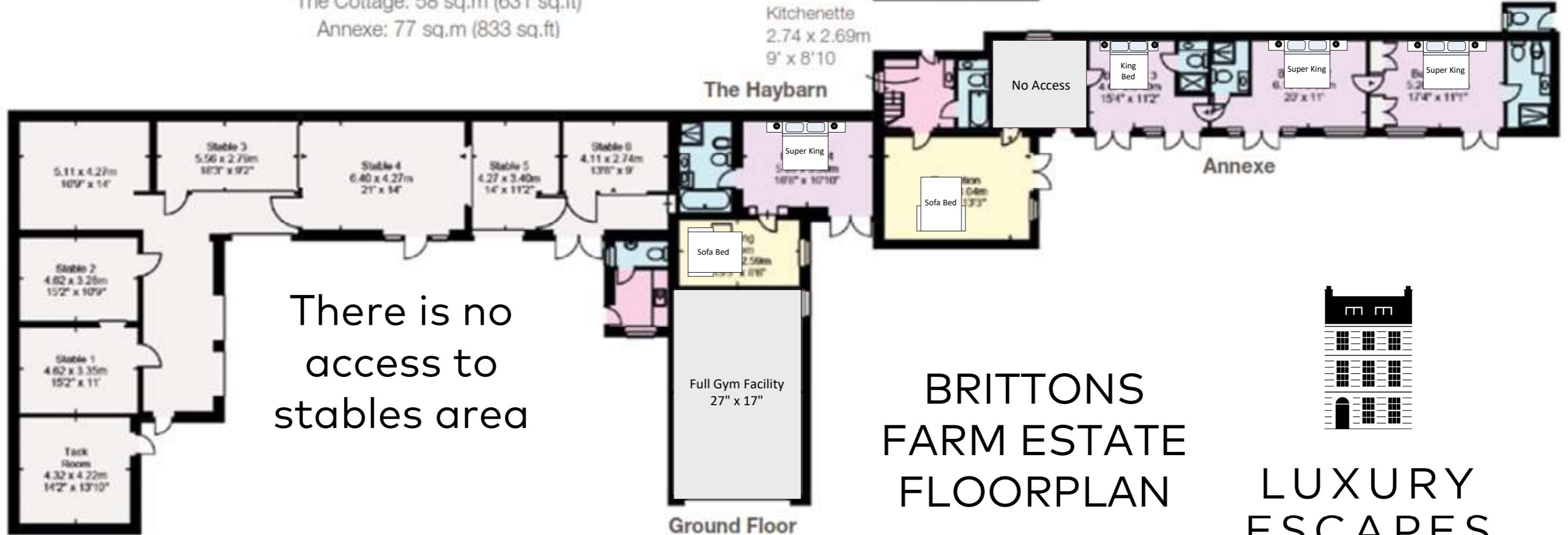


Approximate Gross Internal Floor Area
 Brittons Farm: 356 sq.m (3,832 sq.ft)
 Garage and Outbuildings: 101 sq.m (1,091 sq.ft)
 The Haybarn: 40 sq.m (441 sq.ft)
 The Cottage: 58 sq.m (631 sq.ft)
 Annexe: 77 sq.m (833 sq.ft)

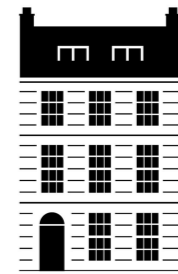


The Cottage:
First Floor



Ground Floor

BRITTONS FARM ESTATE FLOORPLAN

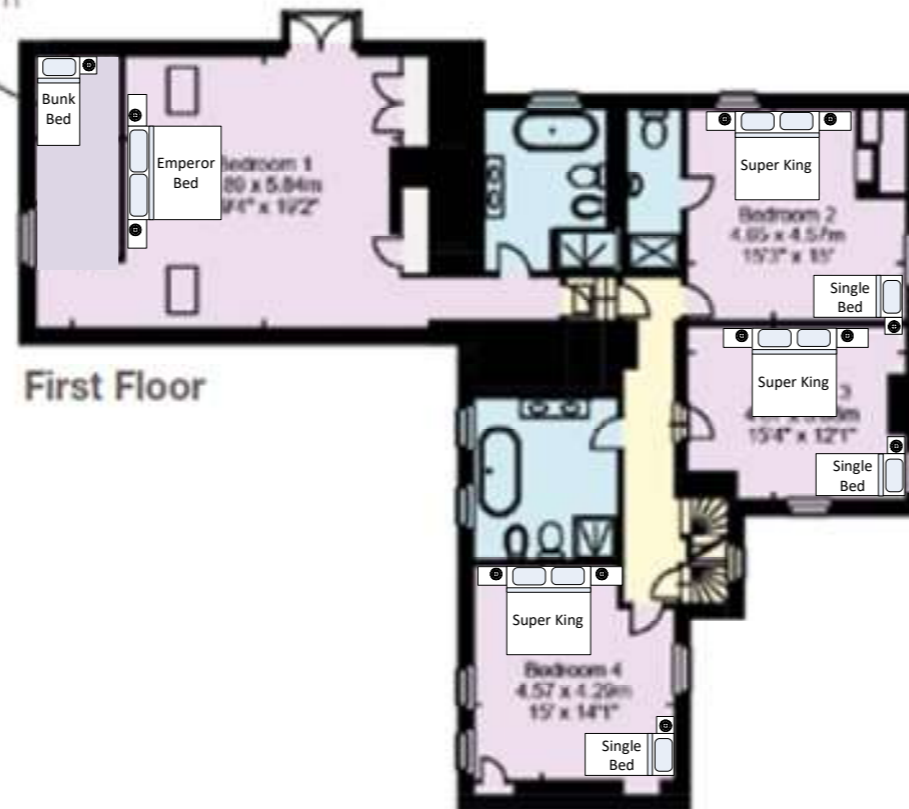


LUXURY ESCAPES BATH

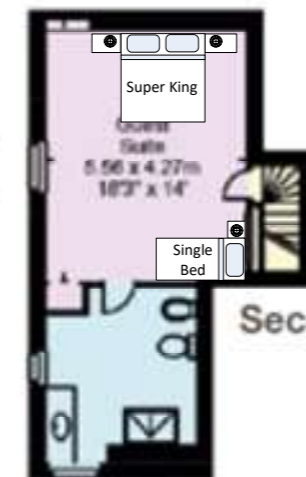


Ground Floor

Dressing Room
5.84 x 1.75m
19'2" x 5'9"



First Floor



Second Floor